

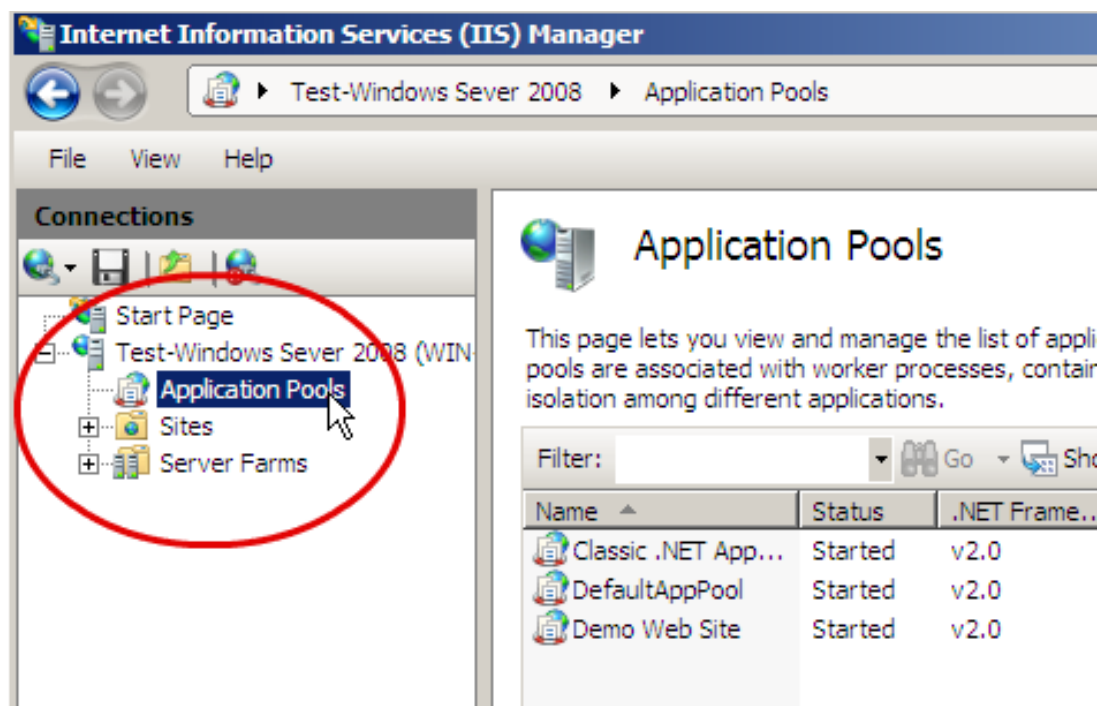
How to Enable a 32-bit Application Pool in IIS 7 (Dedicated/VPS)

WebControlCenter > Dedicated > IIS



1. Once logged into your server, open IIS Manager. You can do this by clicking your Windows Start button and entering "inetmgr" into the search box. Then press enter.

2. On the Connections pane, expand the server node and click "Application Pools."



3. Right click on your application pool and select "Advanced Settings..."





Application Pools

This page lets you view and manage the list of application pools on the server. Application pools are associated with worker processes, contain one or more applications, and provide isolation among different applications.

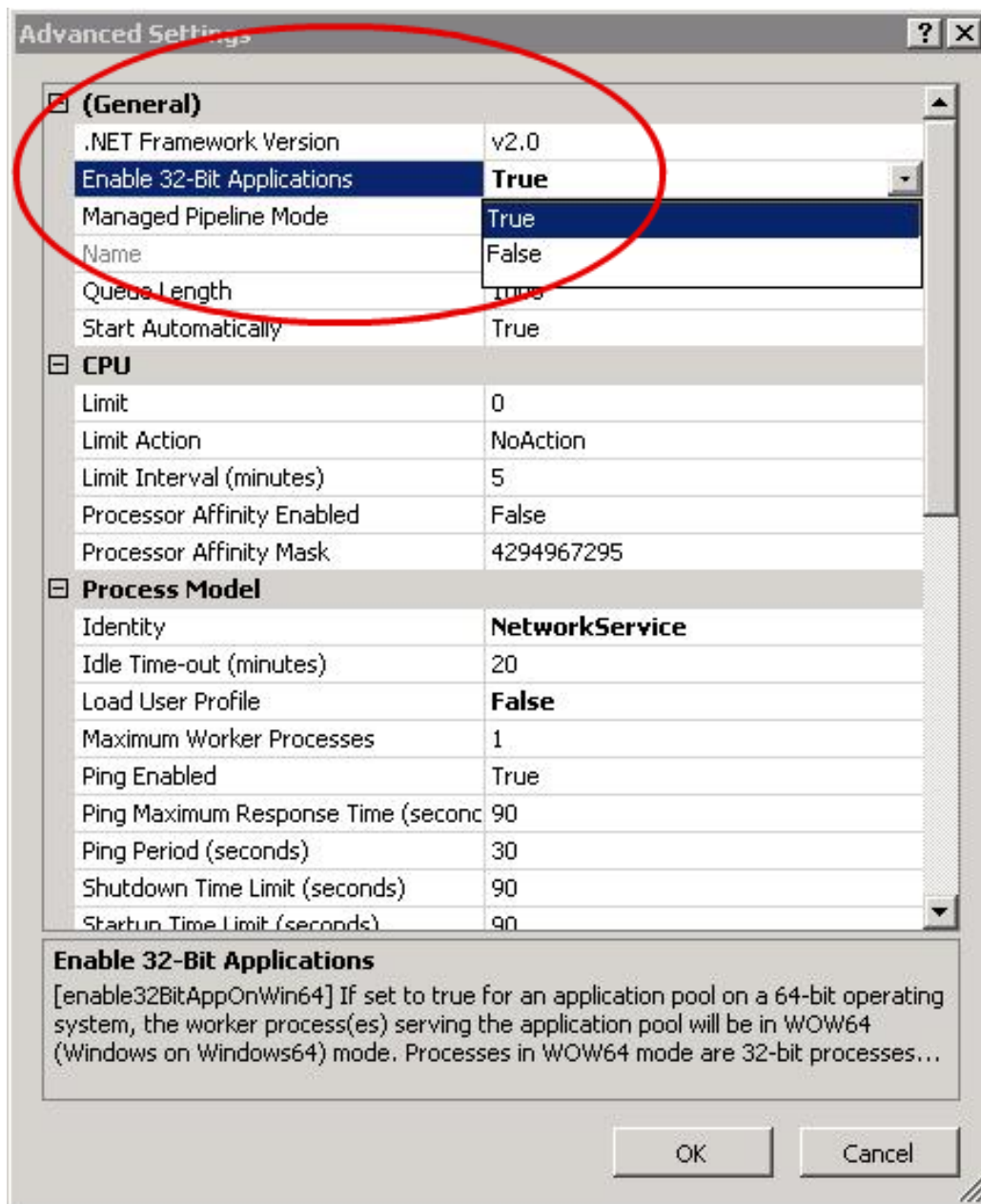
Filter: Go Group by:

Name	Status	.NET Frame...	Managed Pipeli...	Identity
Classic .NET App...	Started	v2.0	Classic	NetworkService
DefaultAppPool	Started	v2.0	Integrated	NetworkService
Demo Web Site	Started	v2.0	Integrated	NetworkService



- Add Application Pool...
- Set Application Pool Defaults...
- Start
- Stop
- Recycle...
- Basic Settings...
- Recycling...
- Advanced Settings...
- Rename

4. Change "Enable 32-bit Application to True."



5. Click "OK" to finish.

Article ID: 1114, Created: setembro 18, 2009 at 18:08, Modified: janeiro 23, 2014 at 14:26