

Arquivo Ação Exibir Ajuda



- Kaspersky Security Center
 - Administration Server: AMC (Not conn)
 - Administration Server ARF
 - Administration Server USER-KAS01
 - Managed computers** 1
 - Estacoes
 - Migracao
 - Servidor PC-Token
 - Servidores
 - Administration Server tasks
 - Tasks for specific computers
 - User accounts
 - Reports and notifications
 - Applications and vulnerabilities
 - Remote installation
 - Unassigned computers
 - Repositories

Groups

Policies 2

Tasks

Computers

Getting started » Managed computers

Policies

Use policies to manage real-time protection settings and general application settings.

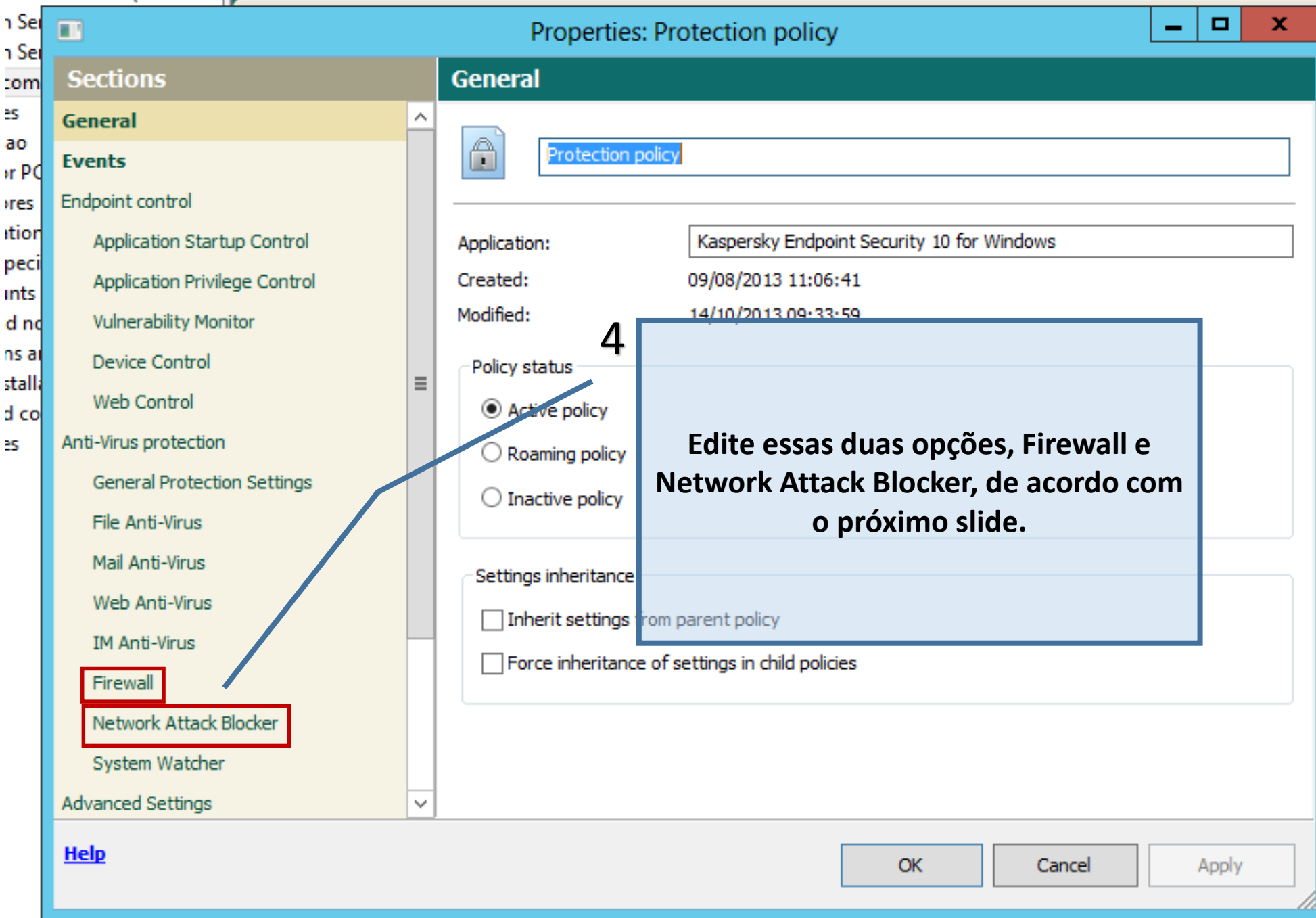
+ Create a policy

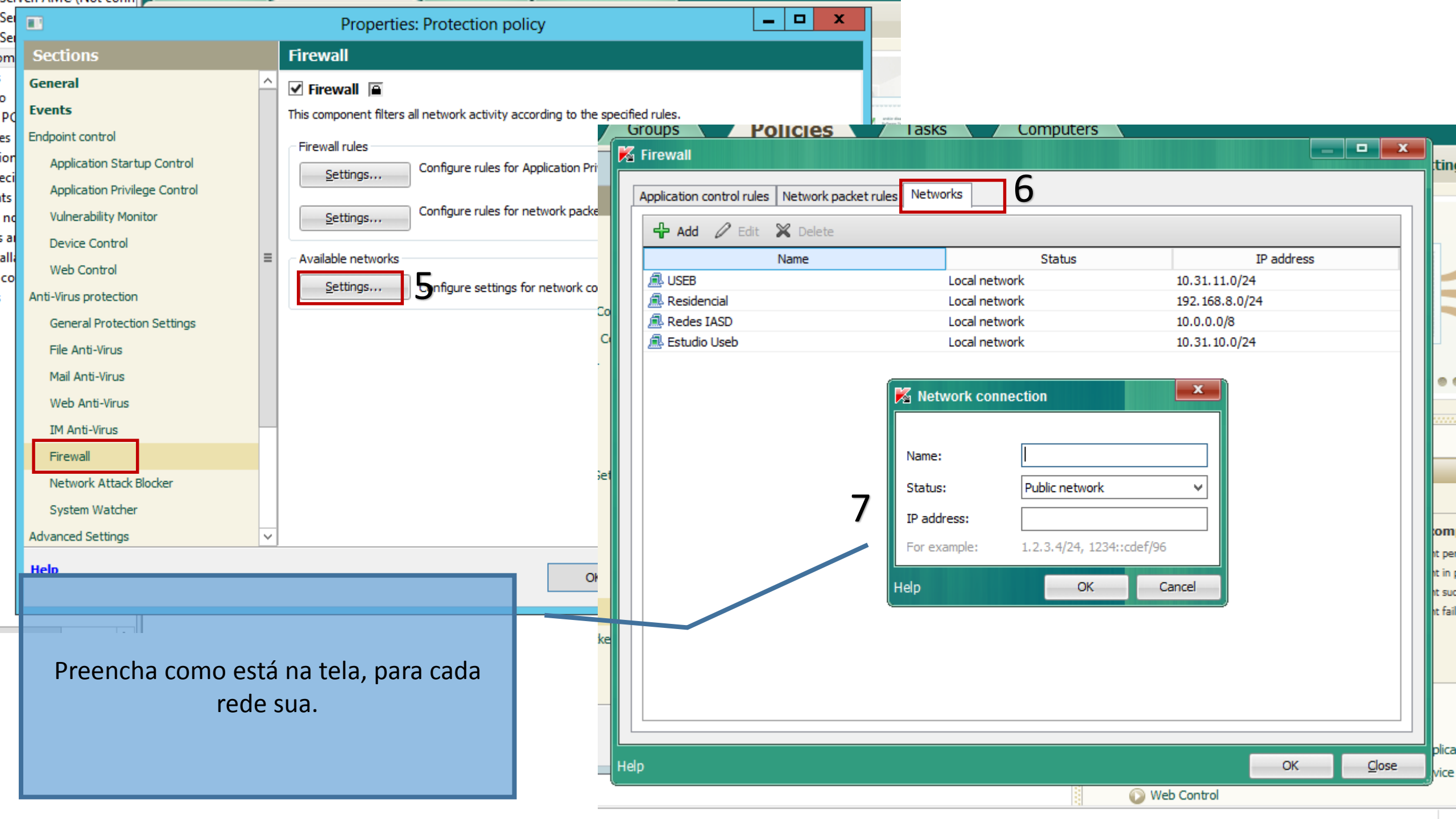
- Create Kaspersky Endpoint Security 10 for Windows policy
- Import policy from file
- Refresh

☐ Show inherited policies

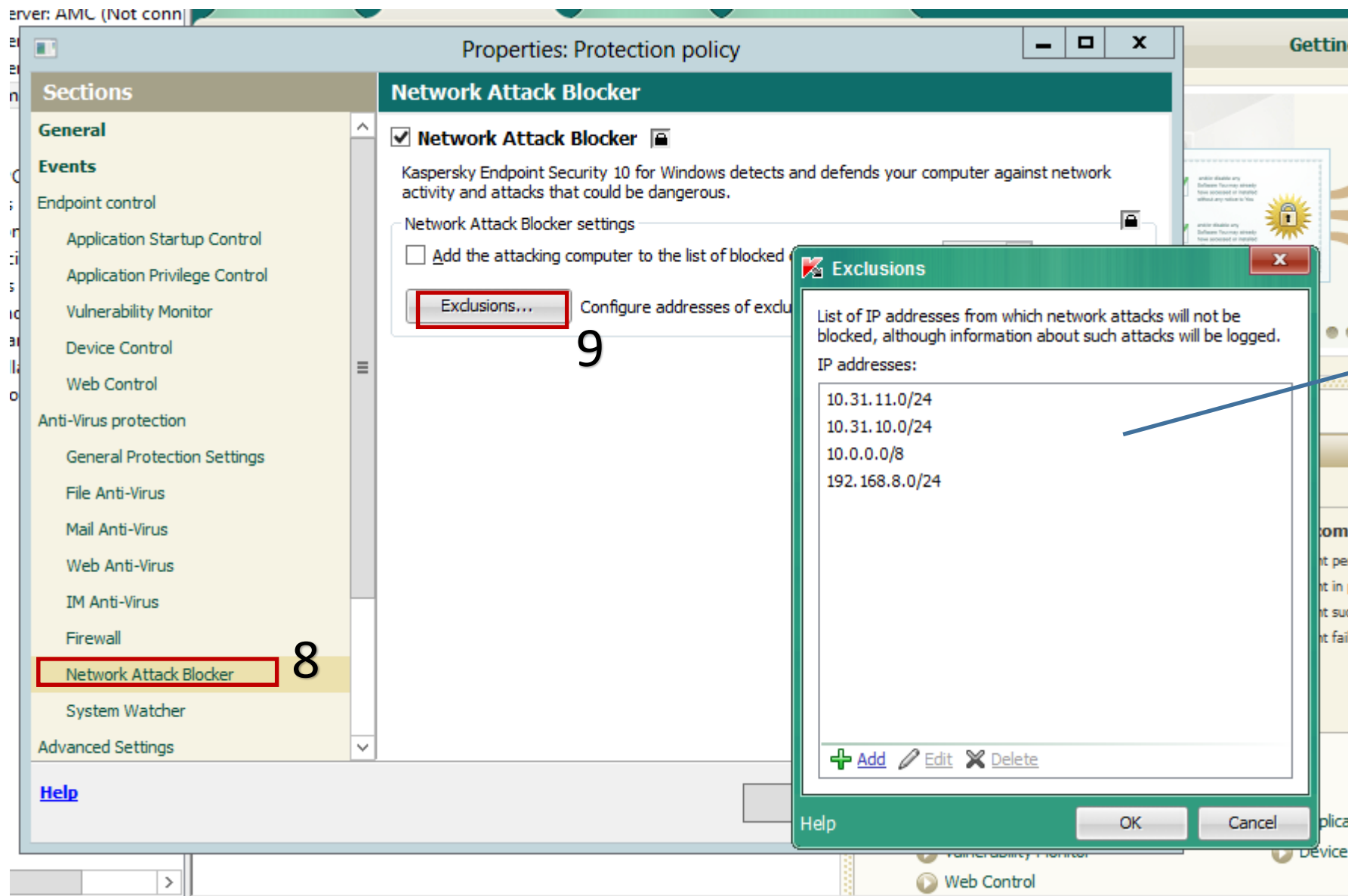
Name	Status	Applic
Policy - Kaspersky Security Center Network Agent	Active	Kasper
Protection policy 3	Active	Kasper

< No selected items >





Preencha como está na tela, para cada rede sua.



10

Preencha como na tela
ao lado.